

How to

Get the Optimal Scan with TRIOS 5.

Practice makes perfect, but here is advice to help you achieve the best results from scanning:

Tip 1. Before you start scanning check the front glass on the scanner for any scratches, water stains and dirt.



Tip 2. Before you proceed with scanning, make sure that the scan tip has heated to avoid fogging. The LED ring will turn green once the scanner is ready to scan.



Tip 3. Make sure to dry the teeth before scanning to ensure that the molar surface is represented correctly on the scan.



Tip 4. Before scanning deep preparation, use the double cord technique and/or hemostatic agent.

Tip 5. Use a mouth mirror or a finger to keep tongue, cheek, and lips away from the scan area.

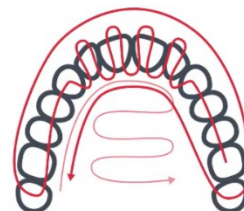
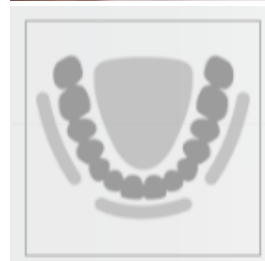
Tip 6. Use the AI scan feature, which will deliver a cleaner scan avoiding soft tissue artefacts scanned on the molar surface or excess soft tissue on the back.

Tip 8. The best scanning method is to start with the molar occlusal surface and then follow the scanning strategy. Scanning strategy consists of 3 swipes.

For the lower jaw: occlusal, lingual, and buccal.

For the upper jaw: occlusal, buccal, and palatal.

Make sure not to jump around as you scan, keeping your movements smooth. If the scanner loses focus you will feel a slight vibration and the white light will decrease in brightness.



Pay extra attention while scanning the margin line and contact points.

Tip 9. While scanning the bite, cover 50/50 of the upper and lower teeth. Keep scanning until arch snap into place. Scan 3-4 teeth for perfect alignment even if the scans snap together earlier.

